

London Investment Markets – Newsletter



London Investment Markets

LIM is the exclusive, institutional-grade trading platform providing a definitive edge for CFD traders in Forex, Crypto, Equities, Indices, and Commodities.



London Investment Markets – News & Markets

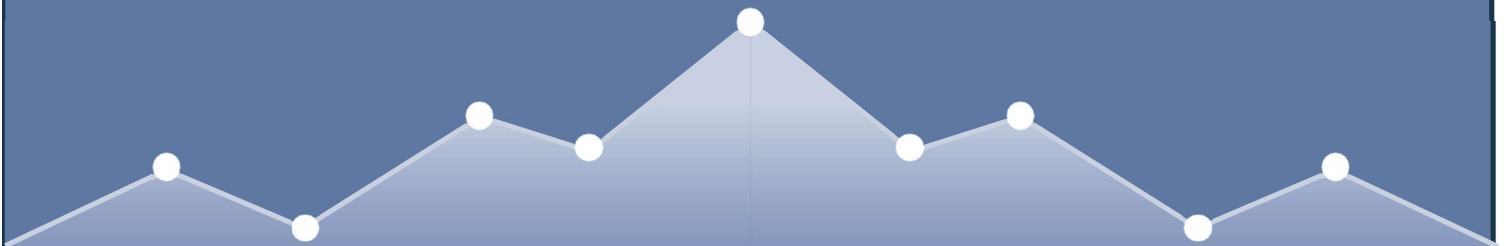
LIM keeps you informed with the latest financial news, market analysis, and economic events that move global markets.

Week Commencing: June 01, 2026

Markets are sliding into June on a wave of renewed risk optimism. Lower-than-expected Core PCE data alongside cooling U.S. GDP numbers have taken the wind out of the U.S. Dollar's sails. Simultaneously, continuous optimism regarding peace talks between the USA and Iran has sent crude oil prices retreating from their recent peaks, providing a massive tailwind for global equities. However, this week leaves no room for complacency as a massive tech convergence meets the ultimate U.S. labour market test.

Market Backdrop: All Eyes on Tech and Labour

The S&P 500 and Nasdaq 100 closed out May at record highs, fuelled by the tech sector's unstoppable momentum and falling structural inflation data. This week, the macro narrative shifts back to the Federal Reserve's favourite tightrope walk: a massive series of labour market data points. If these indicators print cooler, it confirms the "soft landing" narrative; if they print too hot, they risk re-igniting fears of a hawkish Fed pivot.



Key Themes for the Week Ahead

1. The AI Technology Storm: COMPUTEX 2026

The fundamental direction of global equities continues to be driven by the AI revolution. Today, NVIDIA CEO Jensen Huang kicks off **COMPUTEX 2026** in Taipei.

- **The Highlight:** Huang is expected to detail NVIDIA's next-generation "Rubin" GPU and "Vera" CPU architectures.
- **The Sector Ripple:** This event, combined with Microsoft's Build 2026 conference starting Tuesday, will act as a major catalyst for tech, semiconductor, and liquid-cooling infrastructure names (like Vertiv and Eaton).

2. The U.S. Labor Market Gauntlet

Traders face a non-stop barrage of employment data this week, acting as the ultimate litmus test for the U.S. economy:

- **Tuesday:** JOLTS Job Openings.
- **Wednesday:** ADP National Employment Report.
- **Friday:** The coveted **May Non-Farm Payrolls (NFP)** and Average Hourly Earnings. Markets will be hypersensitive to wage growth; a hotter-than-expected print will push Treasury yields higher and create immediate friction for tech valuations.

3. Heavyweight Tech Earnings

While the broader Q1 earnings season has wound down, several massive players in software, cybersecurity, and infrastructure report this week:

- **The Watchlist:** Keep a close eye on **Palo Alto Networks** (Tuesday), **Broadcom**, and **CrowdStrike** (Wednesday). Broadcom's results, in particular, will be heavily scrutinized as a proxy for broader data center and AI semiconductor demand.

Weekly Economic Calendar

Day	Event	Impact	Forecast / Previous
Mon	U.S. ISM Manufacturing PMI (May)	High	53.0 / 52.6
Tue	U.S. JOLTS Job Openings	Medium	Labor Market Clues
Wed	U.S. ADP National Employment Report	High	Private Payroll Trends
Wed	U.S. ISM Services PMI	High	53.7 / 53.6
Thu	U.S. Fed Beige Book	Medium	Economic Conditions Update
Fri	U.S. Non-Farm Payrolls (NFP) & Wages	Critical	Main Volatility Driver

Trading Playbook: Levels & Sentiment

- **S&P 500 Index:** The index sits firmly in record territory after closing above the major **7,500** psychological milestone. Supported by cooling inflation, the immediate trend remains aggressively bullish unless Friday's payrolls surprise heavily to the upside.
- **Brent Crude Oil:** Crude has experienced a firm drop as traders price in progress towards a diplomatic deal between the U.S. and Iran. Look for Brent to establish a trading range around **\$95–\$98**; any breakdown in negotiations will instantly send it back over **\$100**.
- **NZD/USD & AUD/USD:** High-beta commodity currencies are pushing multi-month highs against the weakened greenback. Keep a close eye on the NZD/USD near **\$0.6000**—a clean break above this level exposes a run toward longer-term resistance.

Trader's Note: Volatility is expected to swell as the week progresses. Position sizing should be conservative ahead of Wednesday's dual ISM Services/ADP print, allowing you enough room to manoeuvre before Friday's NFP showdown.

***Past performance does not reflect future results. The above is for marketing and general informational purposes only and are only projections and should not be taken as investment research, investment advice or a personal recommendation.**



Why Choose LIM

Institutional-Grade Trading

Access the same trading tools and conditions previously available only to large financial institutions.



Regulation

London Investment markets Limited is registered in the Marshall islands, Registered Number: 134064. Senior management is comprised of UK qualified Head of Compliance as well as English qualified lawyers who manage the firm to the highest standards of regulatory compliance.



Client Money Protection

Client money is segregated into a dedicated client money account.



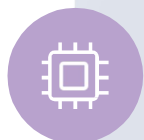
Corporate Governance

The firm is managed by a UK qualified Head of Compliance as well as English qualified lawyers. All procedures at LIM are drafted by market leading professionals.



Liquidity from Large Financial Institutions

Sophisticated technology allows us to provide wholesale interbank prices, historically available only to large financial institutions and corporations.



No Dealing Desk execution

All trades are executed by systems without human interventions.



Secure

Your data is protected by enterprise-grade encryption.